

“Water is life,
and clean
water means
health.”

- *Audrey Hepburn*



Coming Together

Presentation for Alberta Summer Villages
Association

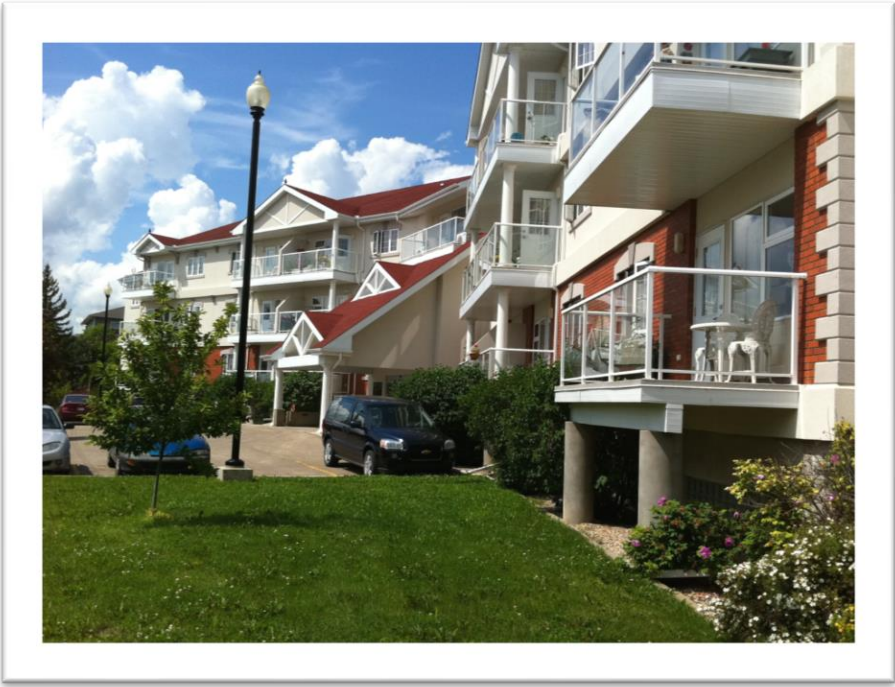
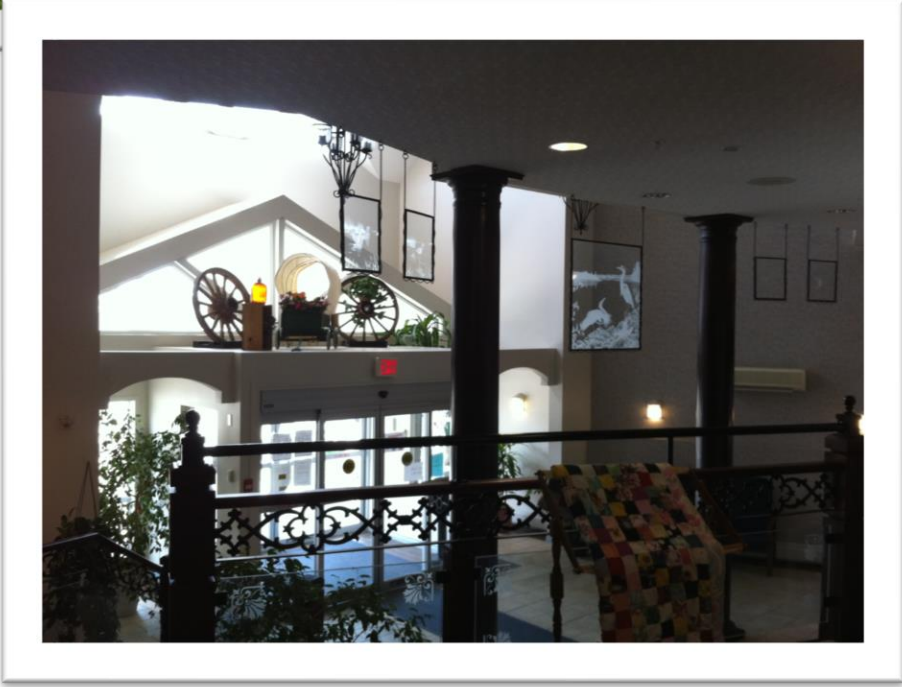
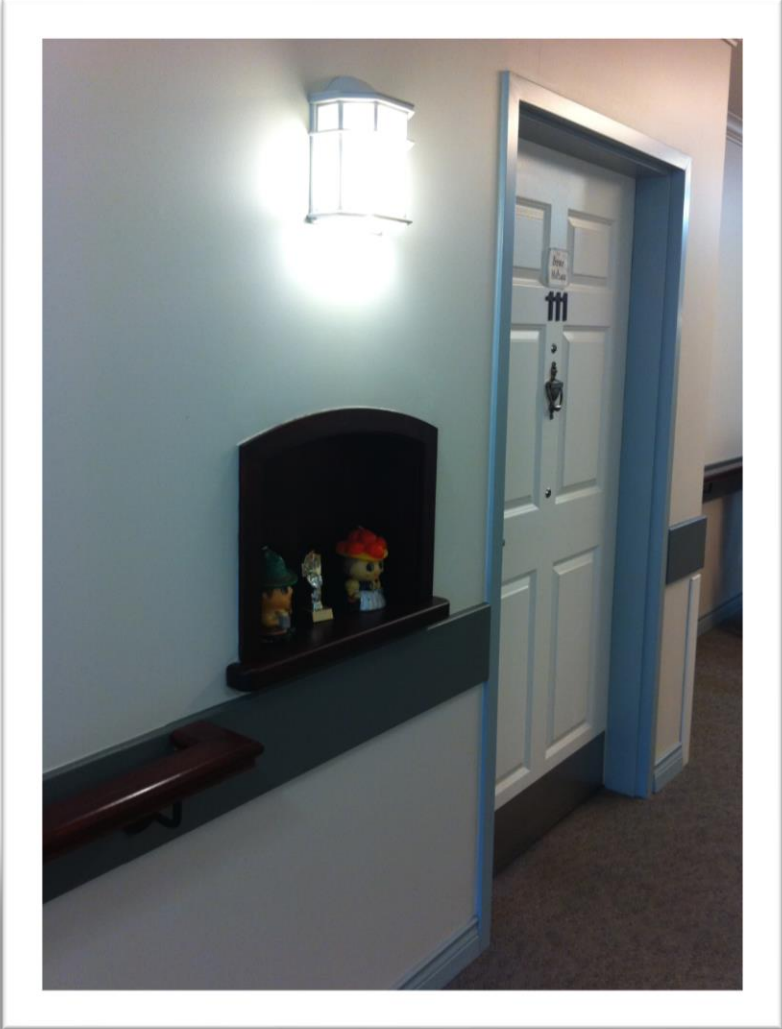
Watershed Planning and Advisory Councils

Janet R. Pomeroy, CMA, CPA, CAE
Athabasca Watershed Council



Alberta WPACs





The Google logo is displayed in its characteristic multi-colored font (blue, red, yellow, blue, green, red) against a white background. A brown triangular shape is visible in the top-left corner of the slide.

19,800,000 results when you search

“Integrated Watershed Management”





Integrated Watershed Management (IWM) is the process of **managing** human activities and natural resources on a **watershed** basis. This approach allows us to protect important water resources, while at the same time addressing critical issues such as the current and future impacts of rapid growth and climate change.



50,300,000 results when you search

“Stakeholder Engagement Plan”





Stakeholder engagement is the process by which an organization involves people who may be affected by the decisions it makes or can influence the implementation of its decisions.

Why do Stakeholder Engagement?

CHANGE



Or



'Water for Life'

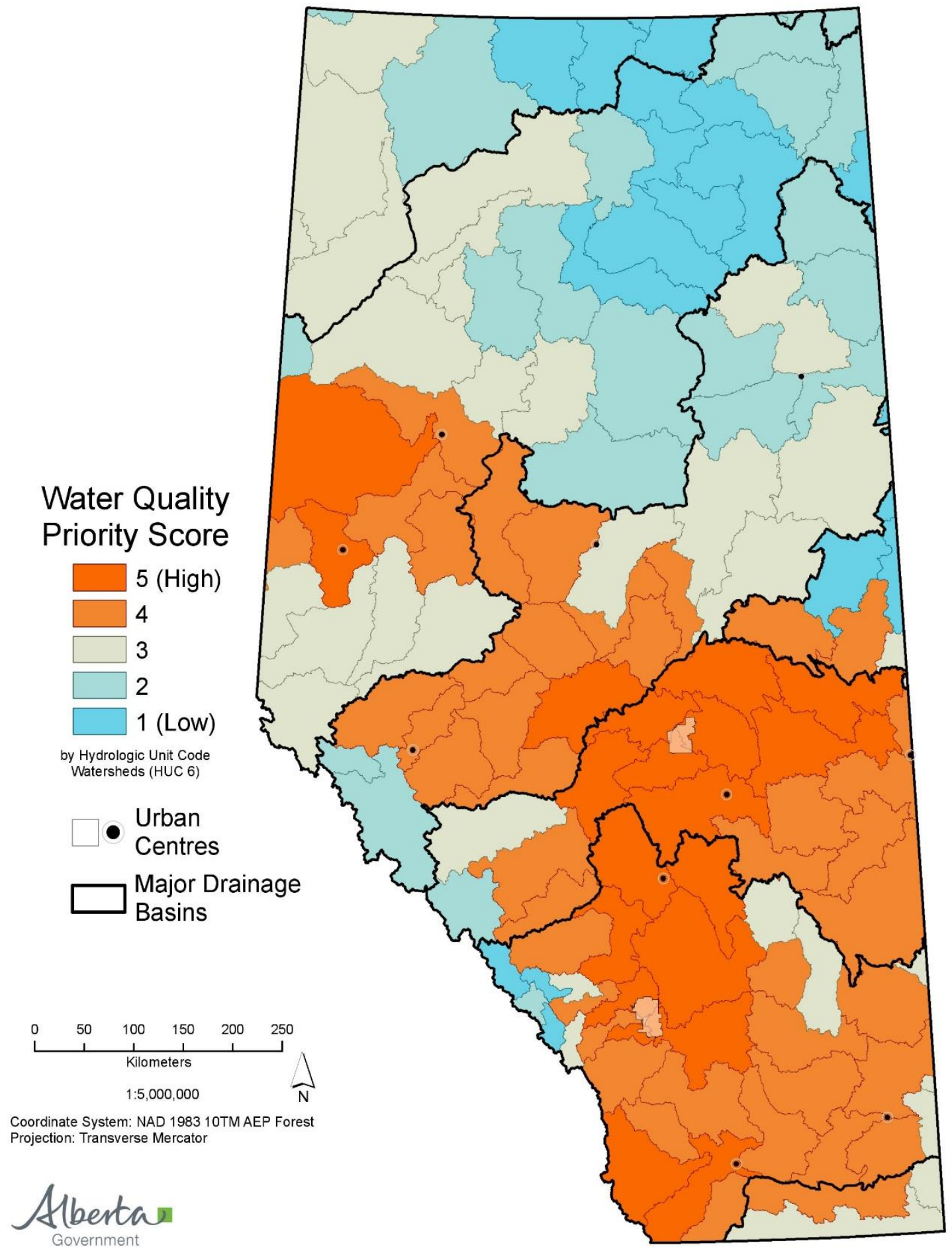
**(Established 2003)
Renewed (2008) and
continues today!**

- Safe, secure drinking water
- Healthy aquatic ecosystems
- Reliable quality water supplies for a sustainable economy

**First strategy of its
kind in North America!**



The map shown here is from Environment and Sustainable Resource Development. It indicates the priority areas for water quality based on the following criteria: upstream development, the ground slope, the density of stream crossings, agricultural intensity, number of settlements, linear disturbance density, total population, riparian cover, wetland cover, and loss of natural cover within each watershed. The red indicates the highest priority watersheds for actions for Water Quality restoration.





Common reasons for Failure?

1. Bad Idea or a good one that is lacking the evidence needed for buy-in
2. People (lack of or wrong)
3. Failed or Flawed Communication or Lack of Transparency
4. Finger - pointing

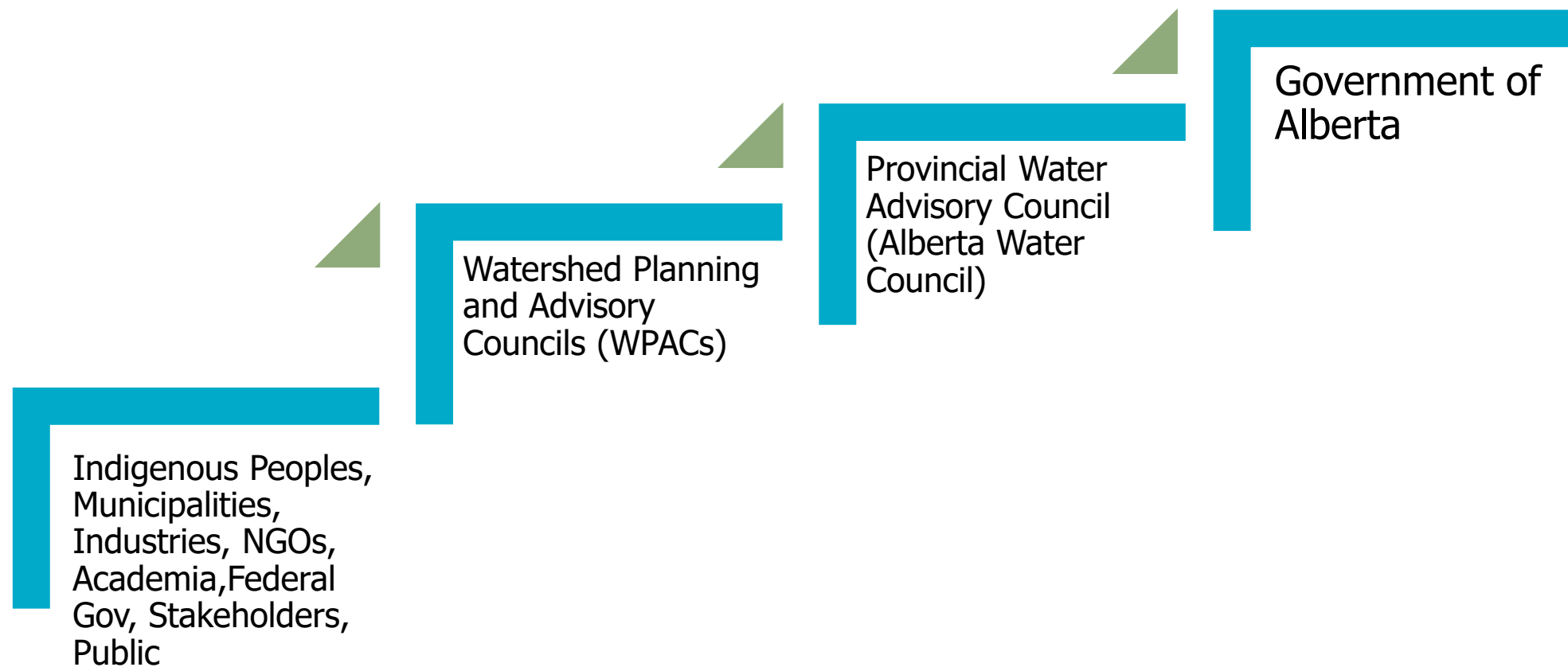
“WPACs have been in the business of finger-pointing reduction for many years.”

- Mark Bennet, Executive Director of Bow River Basin Council -



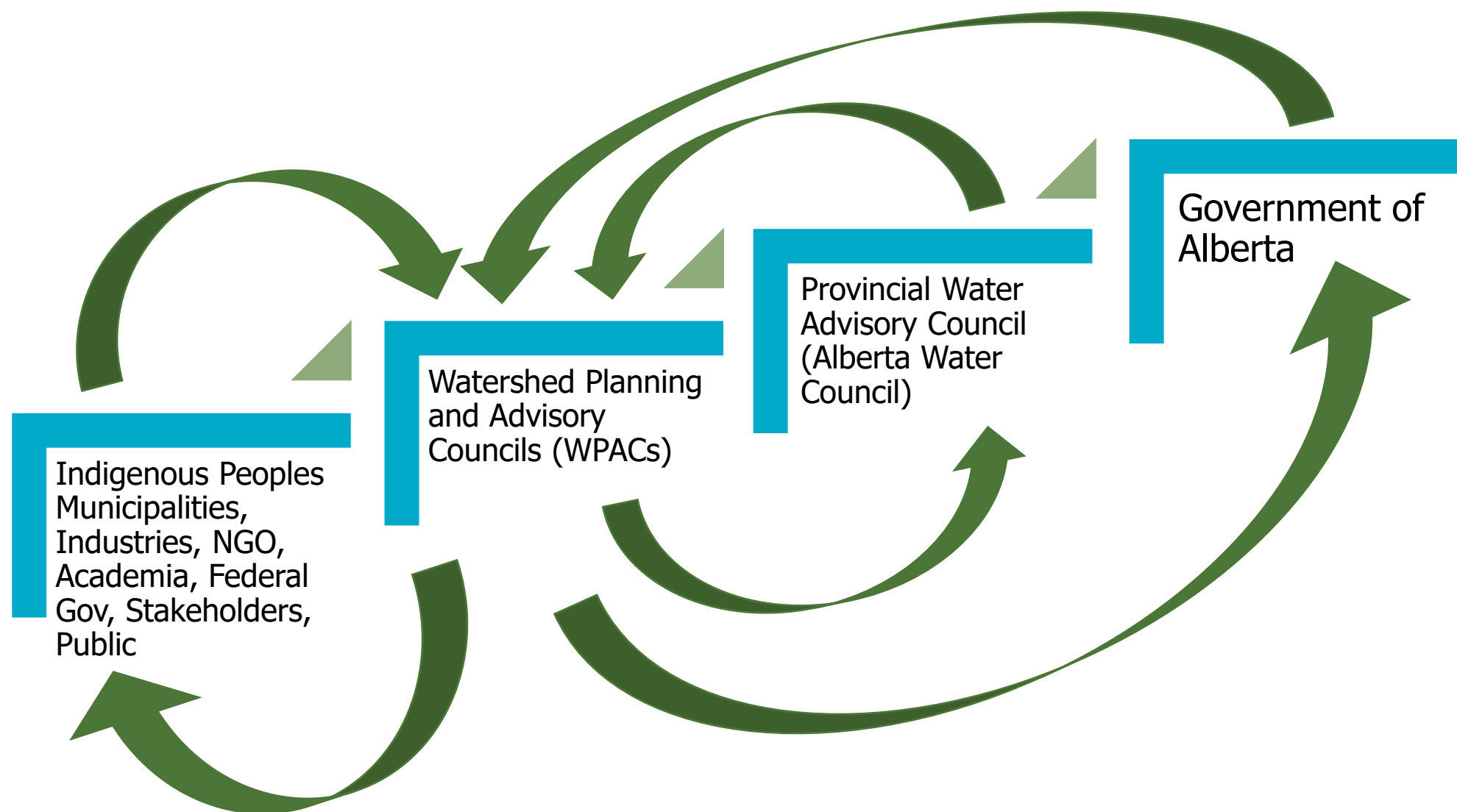
Stakeholder Engagement in “Water for Life”

The *Water for Life* strategy emphasizes stakeholder engagement, information sharing, and collaboration at a range of scales...



Stakeholder Engagement in “Water for Life”

The *Water for Life* strategy emphasizes stakeholder engagement, information sharing, and collaboration at a range of scales...

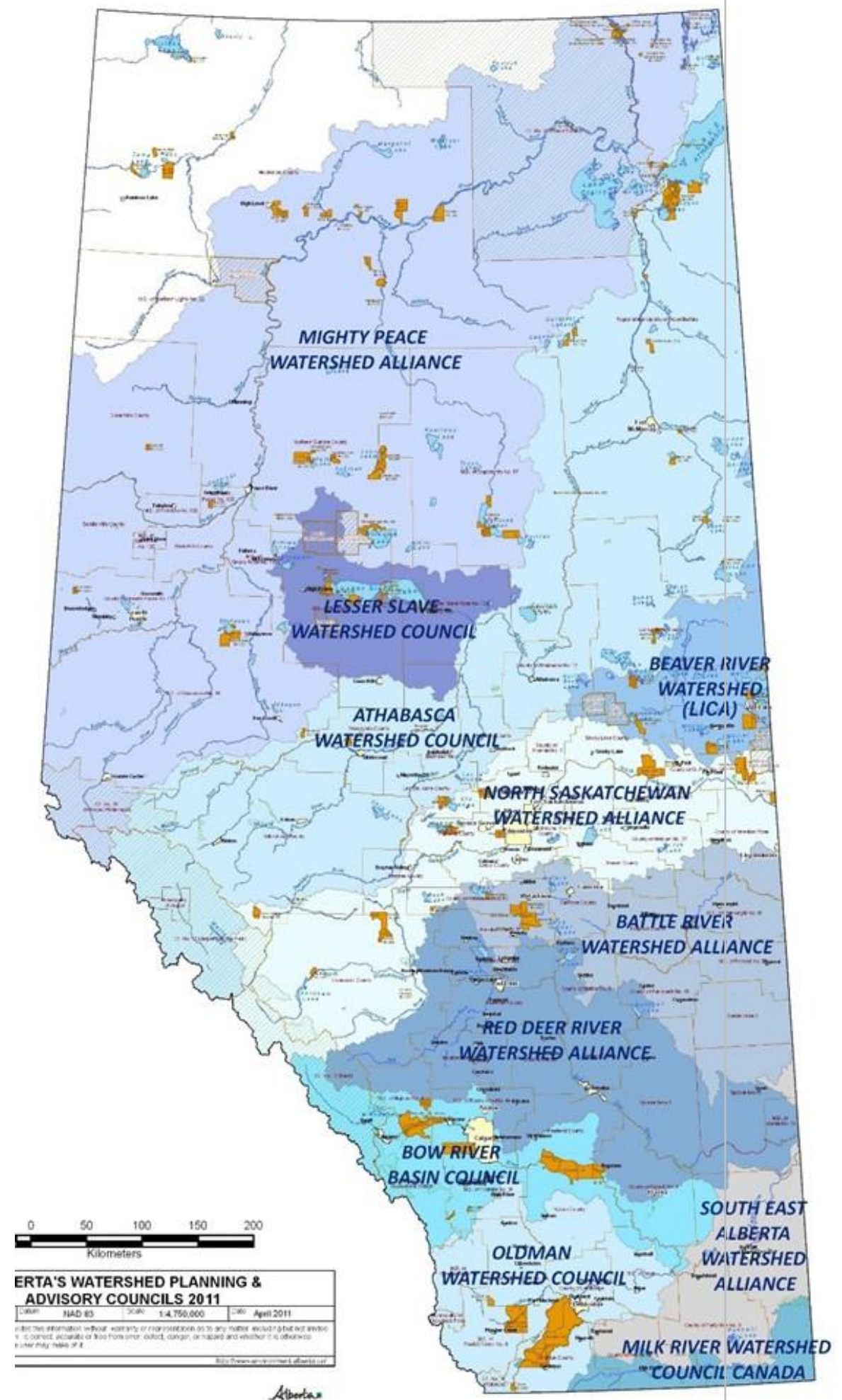


11 Watershed Planning and Advisory Councils (WPACs) undertake four foundational roles in various levels under the ***Water for Life*** strategy for their basin:

1. Convener and Collaborator
2. Monitoring and Reporting
3. Policy and Planning
4. Education and Literacy



Alberta WPACs



Coming Together - Consensus

Multi-stakeholder, consensus-based Boards:

- Industries
- Governments
- Non-Government Organizations
- Indigenous peoples
- Members-at-large



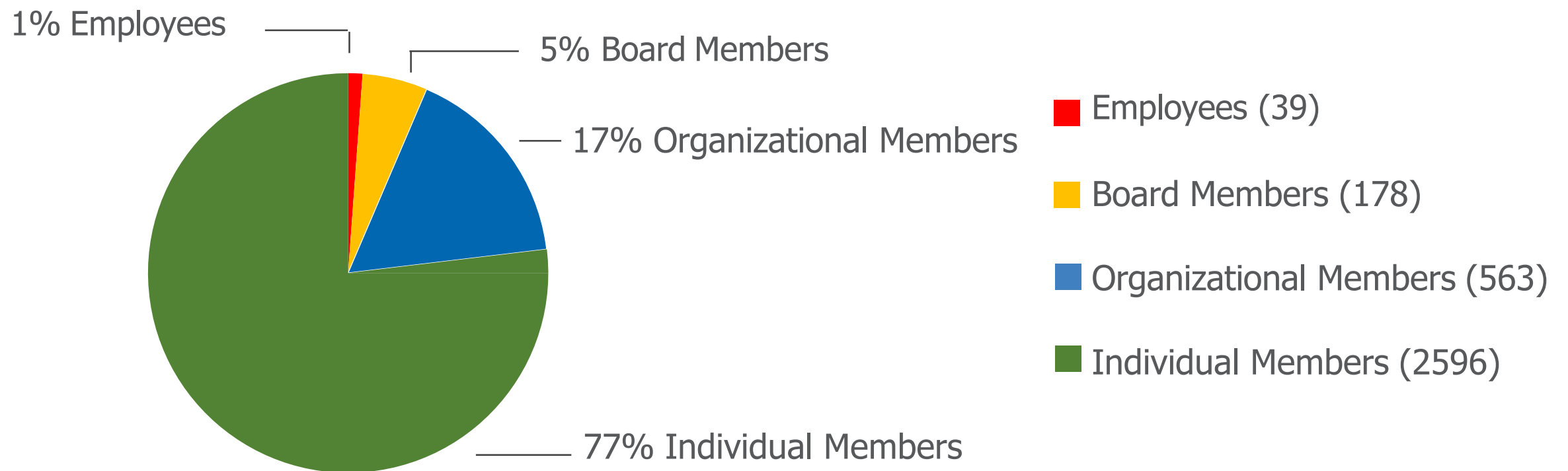
2018-2019



Alberta WPACs

Participation

- Alberta WPACs continue to represent a well-distributed network of over 3000 highly capable and engaged experts.
- This network is managed by WPAC staffers who efficiently achieve credible results at a volunteer:staff ratio of about 80:1.



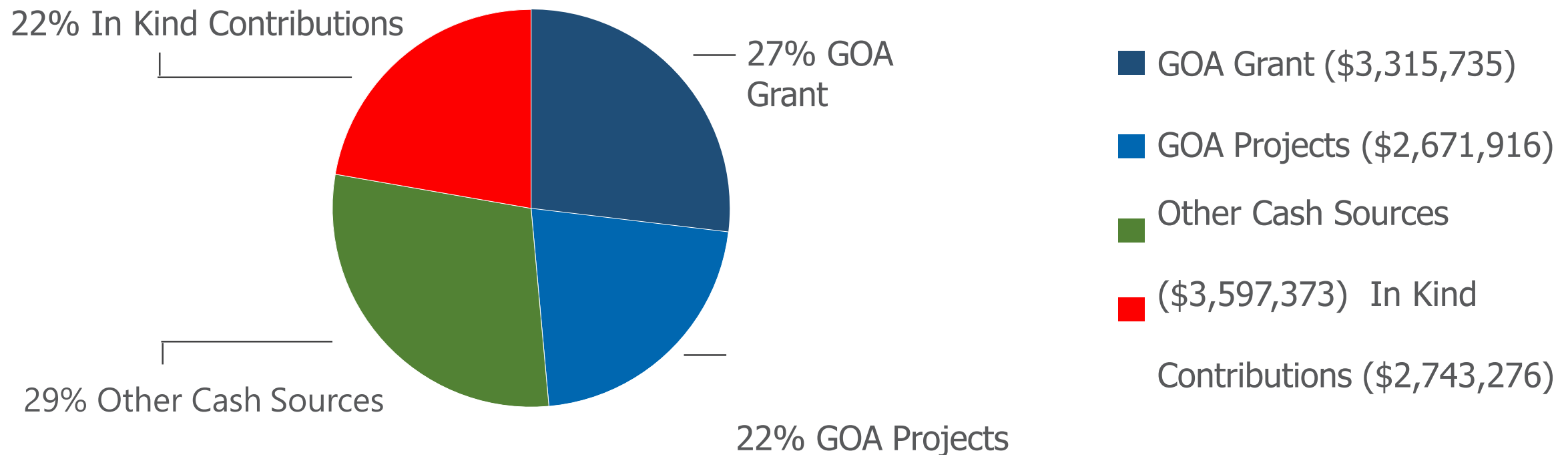
2018-2019



Alberta WPACs

Funding

- 51% of the total investment (other cash & in-kind) is in addition to Government of Alberta funds. Over half of this amount is cash.
- The initial core GOA (grants) investment of \$3.3M foundationally creates the opportunity to generate \$9.6M in resources to support Watershed Management.





Mighty Peace Watershed Alliance

- Located in McLennan, AB
- 3 full time staff
- Formed in 2011
- Their IWMP was accepted for implementation in 2018
- Recent projects include Redwillow Restoration Plan at the Beaverlodge weir, Source Water Protection Plan for the Grimshaw Gravels Aquifer & multiple streambank and livestock crossings under the WRRP grant
- Participated in the Wapiti River Watershed Management Plan
- Hosted multiple educational forums



MPWA hosted the 2018 WPAC Summit



2019 is the Athabasca Watershed Council's 10th anniversary and the celebration will be a Gala and Silent Auction on November 23 in Athabasca!

From only 15 Directors/Alternates to 31 in 1½ year!

- Gained Charitable Status
- Strategic planning and a Bylaws review
- Hosted a Municipal Forum
- Presented to the Regional Farm Women's Conference
- Fund-raising efforts set record high
- Grant Applications for Watershed Resiliency and Restoration Program a GIS survey for preservation and restoration of the riparian intactness of the Pembina sub-watershed.
- Watershed Model & Invasive Species Children's Programs
- Photo Exhibits, Trade Shows, Stewardship Activities
- Future projects: Documentary, Economic Study...
- Working with a Regional Water Commissions on locating non-point sources of pollution in a tributary.



- **Draft...IWMP 10 points of focus:**
 - Water Quality (source to tap)
 - Healthy Habitats for Fish & Wildlife
 - Flow Needs Met (economy, society, culture, environment)
 - Land Use Practices (inc. point and non-point pollution managed)
 - Traditional Knowledge informs decision making and planning.
 - Policies and plans support watershed health.
 - Research, Monitoring, Assessment (inc. cumulative effects)
 - Effects of climate change are known and inform decision-making.
 - Education and Outreach
 - Sub-basin Stewardship Initiatives and Projects



Lesser Slave Watershed Council

- Located in High Prairie, AB
- 2 full time staff
- 12th year of operation
- Recently completed their watershed management plan
- Second year of tributary monitoring program
- Hosts education and outreach programs focusing on water quality, stewardship and fish health
- Working on Watershed Watershed Resiliency and Restoration Program - working with landowners to implement best management practices such as off-stream watering, riparian fencing, livestock crossings, and improving the health of riparian areas by reducing bare ground cover and erosion potential



LSWC Executive Director Meghan Payne measuring water quality parameters.



Young citizen scientists measuring water quality at Lesser Slave Lake.

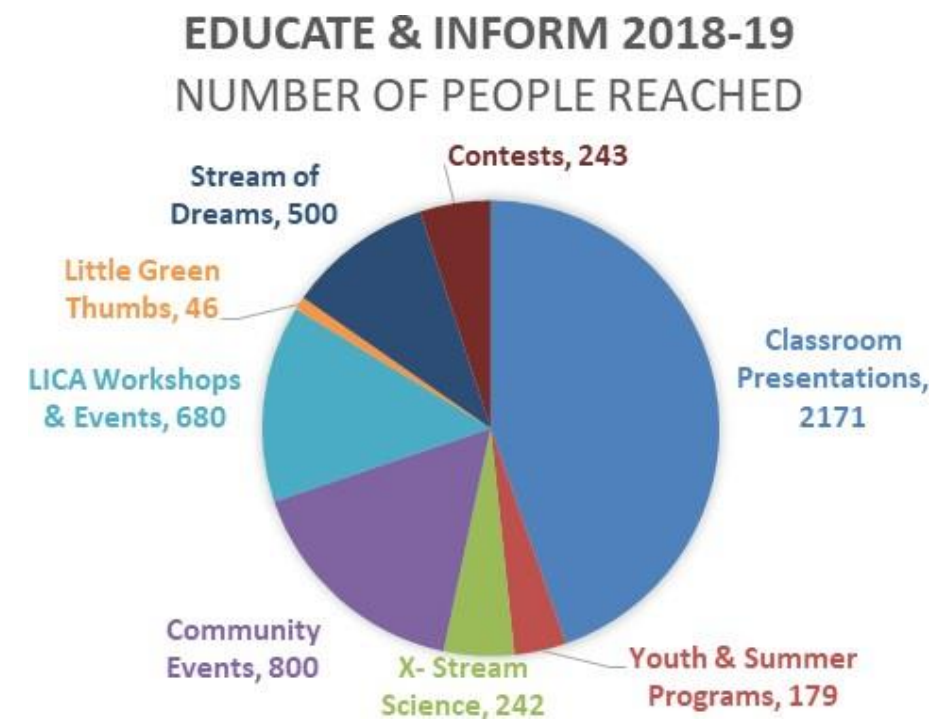


Lakeland Industry and Community Association

- Located in Bonnyville, AB
- 8 full time staff
- Formed in 2000
- Watershed/Airshed synergy organization
- Focuses on environmental monitoring, environmental management, and community education and outreach.
- Current projects include Jesse Lake Riparian area restoration, "Stream of Dreams" water education program, LakeWatch, and citizen science at Muriel Lake



Painting Dream Fish with the Stream of Dreams program.





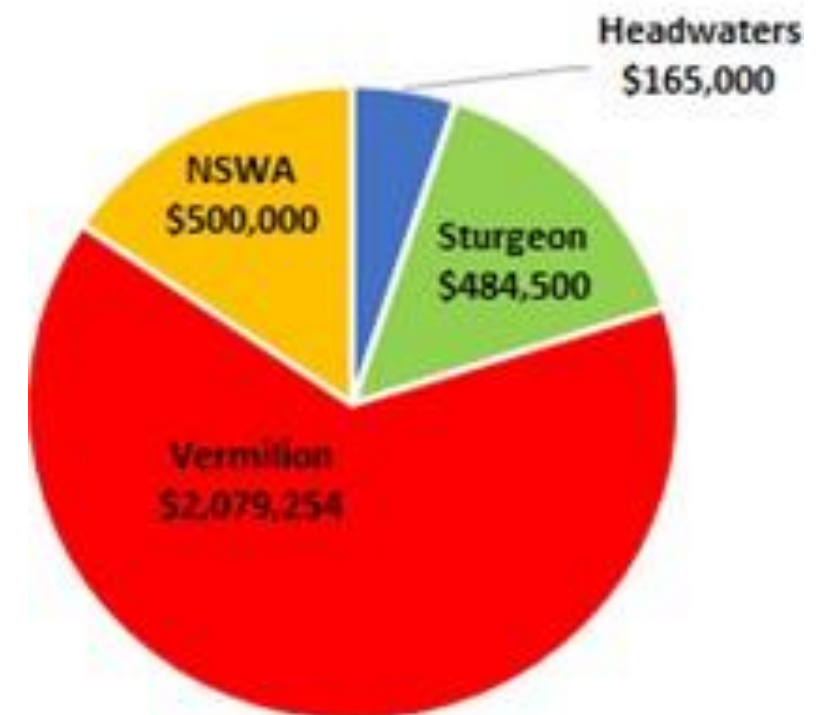
North Saskatchewan Watershed Alliance

- Located in Edmonton, AB
- 7 full time staff
- Formed in 2000
- Works in partnership with the following sub-watershed Alliances:
 - Headwaters Alliance
 - Sturgeon River Alliance
 - Vermillion Watershed Alliance
- To date have received over \$2.7 million in grant funding
- Some of their watershed planning projects include partnerships with AEP, EPCOR and University of Alberta



The new NSWA website recently launched.

Project Grant Funding





Battle River Watershed Alliance

- Located in Camrose, AB
- 5 full time staff
- Formed in 2006
- Currently implementing their watershed management plan
- Have hosted multiple stakeholder forums in the past year
- Part of the ECHO Network (This Environment, Community, Health Observatory)
- Present 4 OTIS (Outstanding In Stewardship) Awards to recognize outstanding stewardship efforts



2018 Municipal Water Forum in Wetaskiwin.

- **IWMP 12 points of focus:**
 - Habitat Conservation and Management
 - Fish and Wildlife
 - Non-native and Invasive Species
 - Non-point source Pollution Management
 - Point Source Pollution Management
 - Source Water Protection
 - Riparian Areas
 - Land Use Practices
 - Wetlands
 - Drought Management
 - Surface Water Quantity
 - Ground Water Quantity



Red Deer River Watershed Alliance

- Located in Red Deer, AB
- 4 full time staff
- Formed in 2005
- Key strategic focus areas for the RDRWA in 2018/19 include:
 - modernizing communications
 - mapping ecological infrastructure
 - supporting municipalities
 - enhancing regional water security
- Hosts both a Spring and Fall forum to update the community on science, policy and stewardship
- supported the development of a source water protection toolkit by the Red Deer River Municipal Users Group
- Released Blueprint: An Integrated Watershed Management Plan for the Red Deer River Watershed (Phase One: Water Quality)
- Organized a two-day municipal bus tour for municipal elected officials, staff, and MLAs with the goal of showcasing water and land-related topics across the southeastern portion of the watershed



Recognizes outstanding stewardship efforts Watershed Ambassador Awards



Bow River Basin Council

- Located in Calgary, AB
- 3 full time staff
- Formed in 1992
- Became a WPAC in 2004
- Focusing on riparian zones, aquatic ecosystems, quality and quantity of water and effects of land use
- Hosts annual Science Forums

Theme: Improving aquatic and riparian health through watershed management



Challenge: Matching economic growth, municipal growth and other needs with water supply and meeting aquatic environment requirements

Challenge: Protecting the long-term health of the aquatic environment



Opportunity 1: Continue to involve collaborative groups in watershed management

Opportunity 2: Provide clarity, transparency and information on the decision-making processes implemented through the Plan

Opportunity 3: Implement programs and actions beyond the Plan that will not only prevent further degradation, but improve the long-term health of the aquatic environment

Theme: Measuring, monitoring and managing the watershed system



Challenge: Identifying and understanding the critical linkages between watershed outcomes/objectives, information/data, and monitoring/modeling



Opportunity 1: Provide the resources necessary to continually work towards filling critical gaps in information about water and watershed management

Opportunity 2: Provide the resources necessary to continually develop the monitoring and modeling capability and capacity in the SSRB

Opportunity 3: Clearly define specific watershed outcomes to enable more effective performance assessment

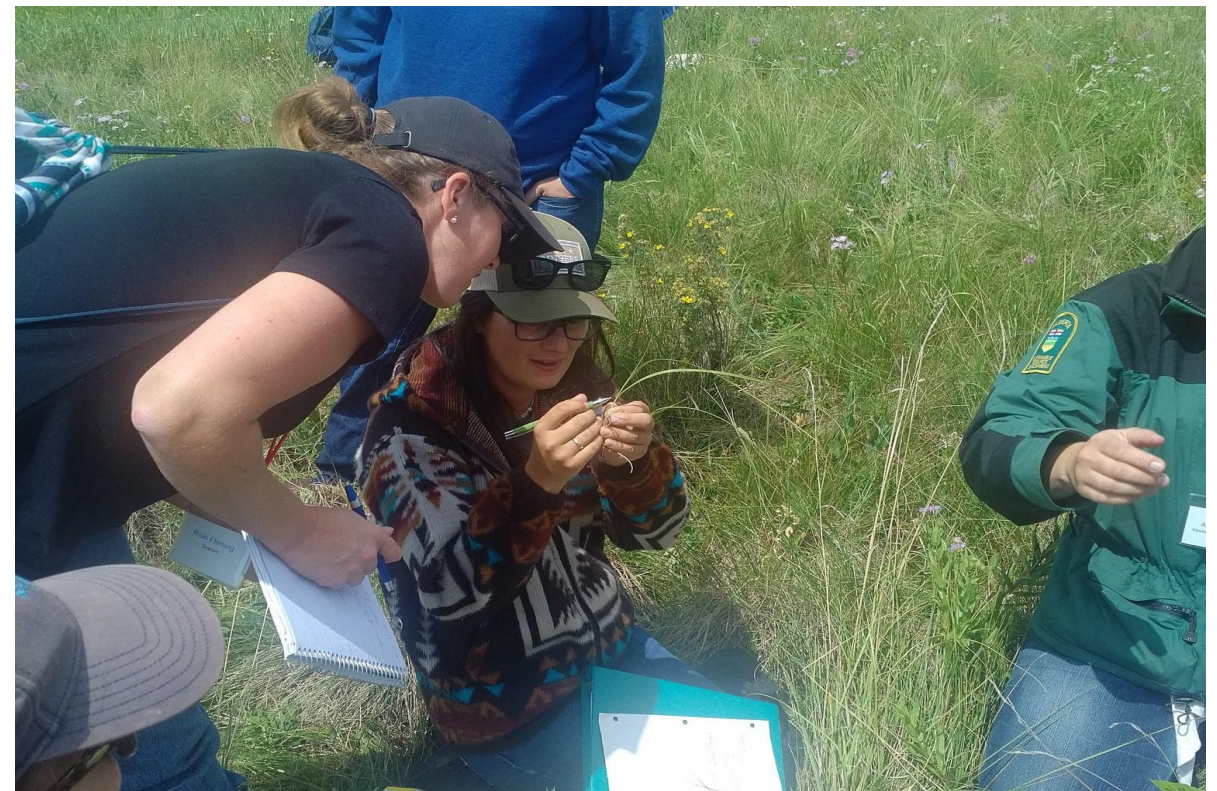


Oldman Watershed Council

- Located in Lethbridge, AB
- 4 full time staff
- Formed in 2004
- Restoration and Education programs in their headwaters
- Watershed Legacy Program supports on-the-ground stewardship
- Partners with regional organizations in invasive weed control by hosting weed pulling events
- Engaged nearly 900 students over the past year through interactive activities, in-classroom presentations, and field trips



Staking willows to restore streambanks and reduce erosion at Pasque Creek.



Learning how to identify plants at the 16th Annual Southern Alberta Grazing School for Women.



Milk River Watershed Council Canada

- Located in Milk River, AB
- 3 full time staff
- Formed in 2005
- Trans-boundary watershed – shared with Saskatchewan and Montana
- Water shortages occur frequently, and water scarcity continues to grow
- Implementing Phase 2 of their Watershed Restoration and Resiliency Program (WRRP)
- Has a Long-term Surface Water Quality Monitoring Program



The Council has established teams to help fulfill the goals of the MRWCC.

Community Awareness & Involvement Team

Research and Monitoring Team

Water Supply and Management Team

Transboundary Watershed Team



South East Alberta Watershed Alliance

- Located in Medicine Hat, AB
- 2 full time staff
- Formed in 2008
- Completed 7.1 km of riparian restoration through partnerships with landowners
- Through funding from the WRRP grant, 702 km of riparian areas of streams and lakes/reservoirs were assessed
- Held educational forums, produced educational materials, organized and participated in community events and initiatives, and promoted awareness about caring for water, watersheds, and ecosystems

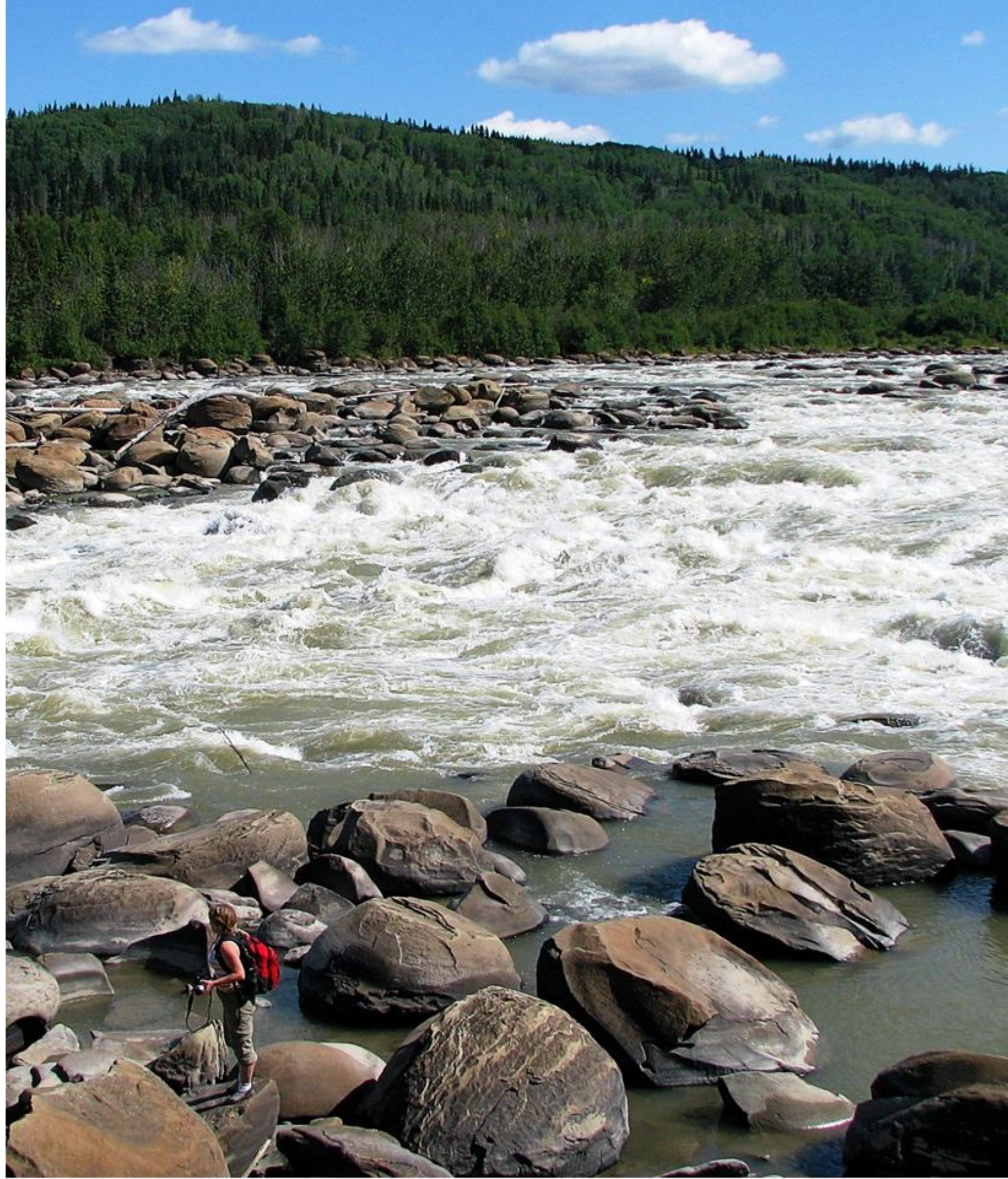


Fencing installed in October 2018 and chokecherry planted in November 2018.

Grand Rapids – Athabasca River

Arguably one of the most impressive examples of spheroid boulders in the world. Thousands lining the banks with some of them over 3 meters in height!

Photo courtesy of Grand Rapids Wilderness Adventures





- **Become a member of your local WPAC!**
- **Donate! Support our work!**

Next Steps...



Acknowledgements

We thank our many Donors and
Alberta Environment and Parks for their ongoing support!

“I don’t believe
in collective
guilt, but I do
believe in
collective
responsibility.”
- *Audrey Hepburn*

